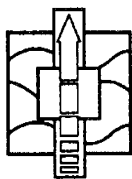


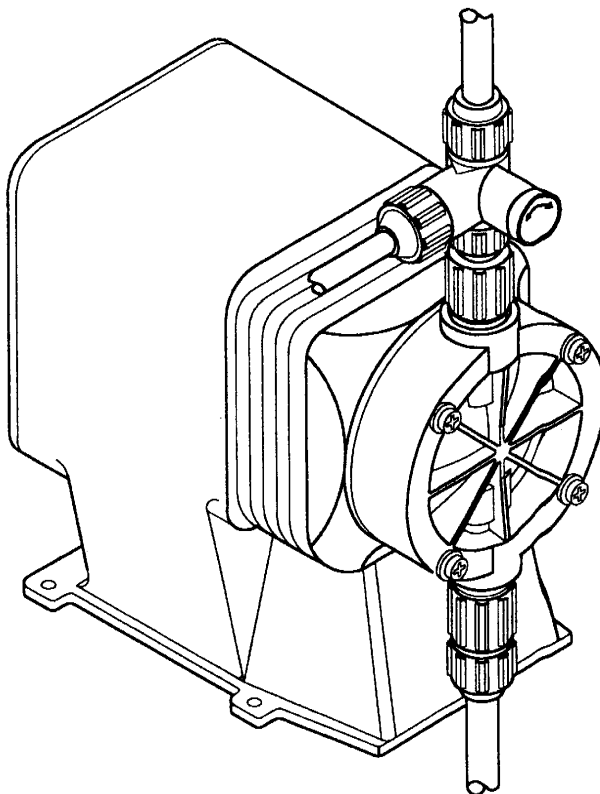
Premia 75

solenoid metering pump



PARTS IDENTIFICATION SCHEDULE

- Wetted Component Assemblies
- Drive Assemblies
- Control Panel Assemblies

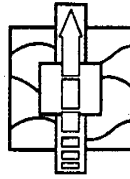


US Filter

Wallace & Tiernan Products
1901 West Garden Road
Vineland, N.J. 08360

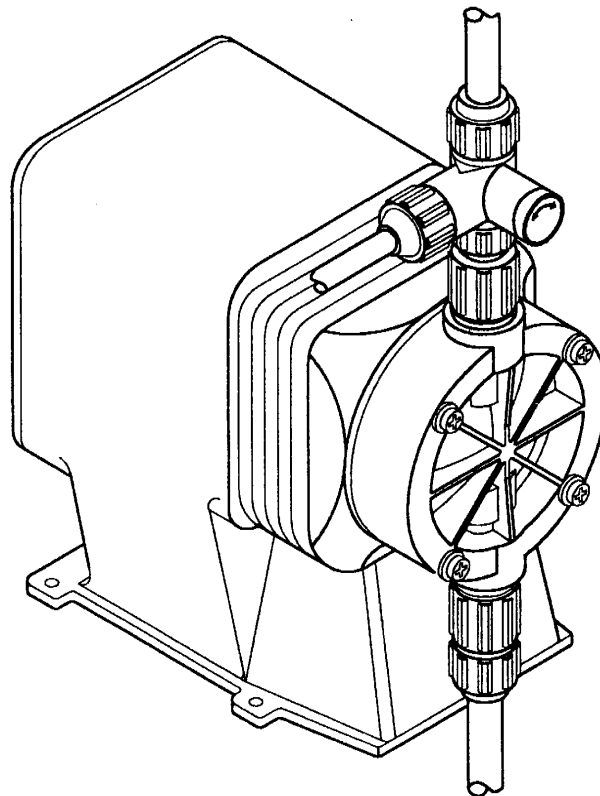
Premia 75

solenoid metering pump



PARTS IDENTIFICATION SCHEDULE

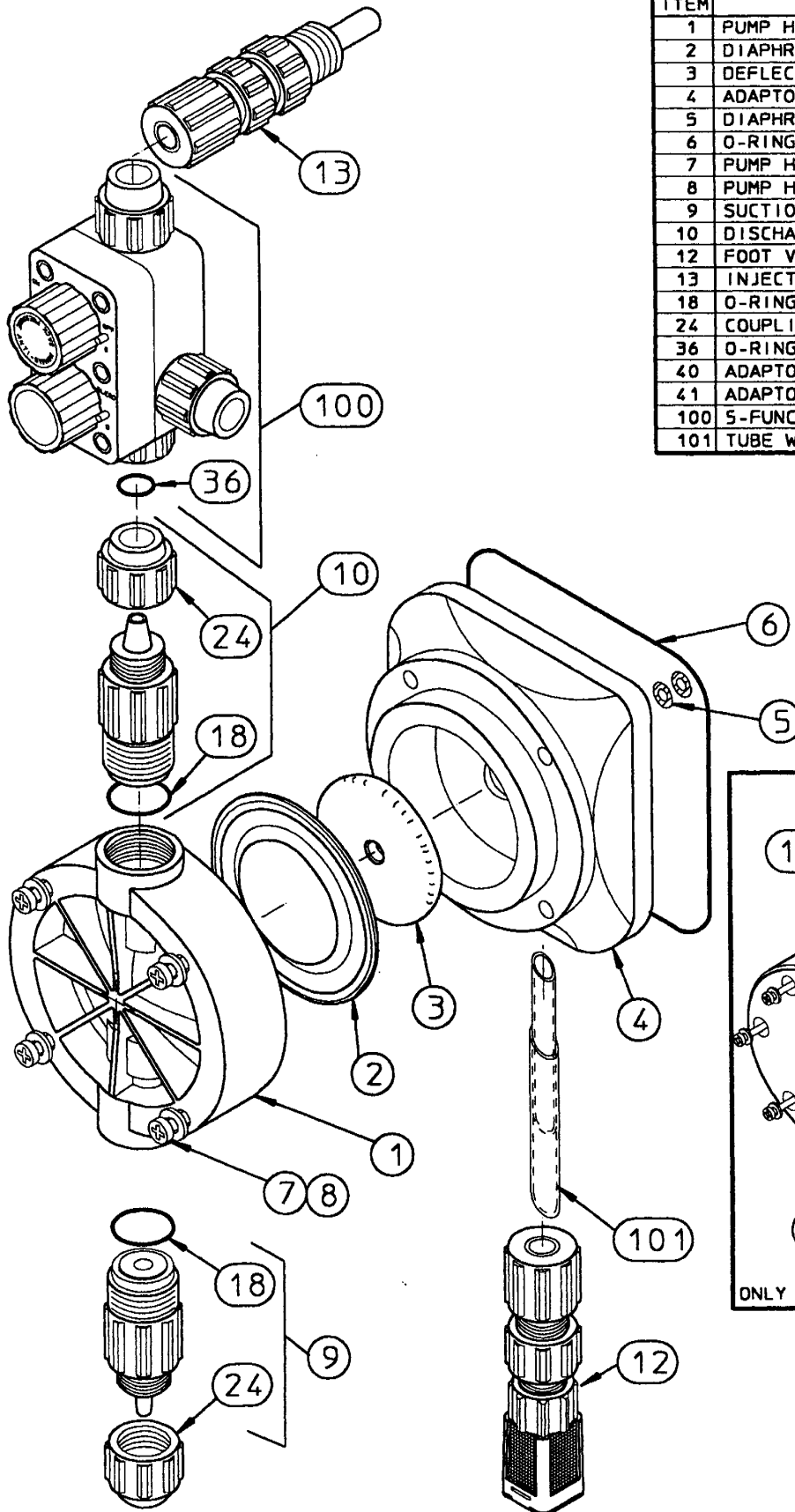
- Wetted Component Assemblies
- Drive Assemblies
- Control Panel Assemblies



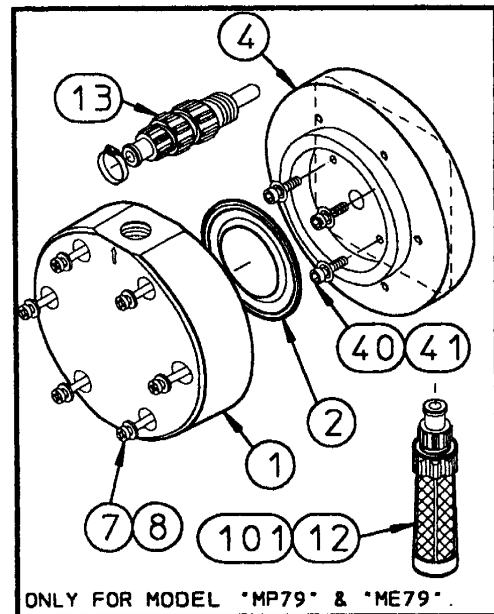
USFilter

Wallace & Tiernan Products
1901 West Garden Road
Vineland, N.J. 08360

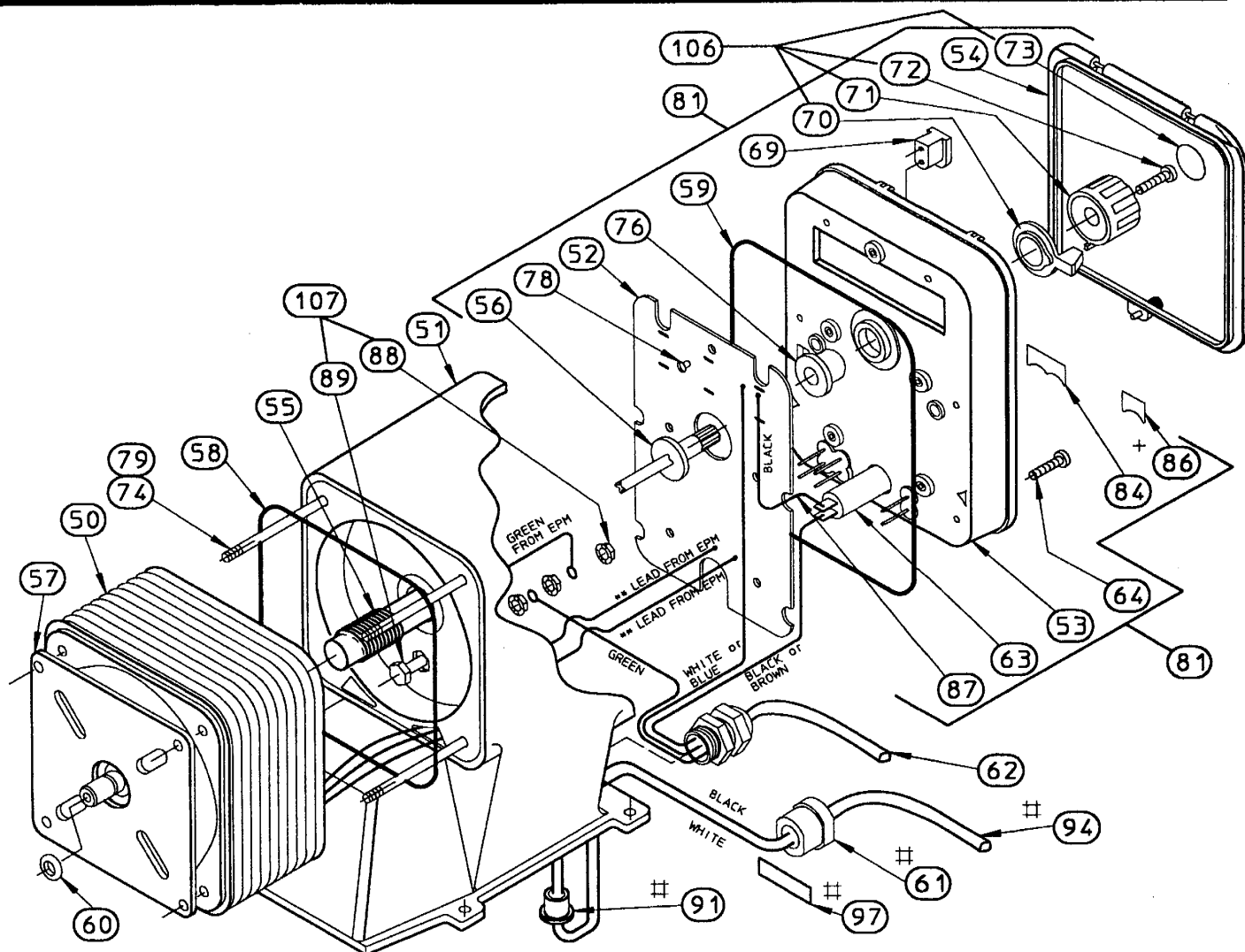
SERIES MP AND ME WETTED COMPONENT ASSEMBLIES PARTS IDENTIFICATION



ITEM	DESCRIPTION	QTY
1	PUMP HEAD	1
2	DIAPHRAGM	1
3	DEFLECTION PLATE	1
4	ADAPTOR	1
5	DIAPHRAGM SHIMS	0-2
6	O-RING	1
7	PUMP HEAD SCREWS	4-6
8	PUMP HEAD WASHERS	4-6
9	SUCTION VALVE CARTRIDGE ASSY	1
10	DISCHARGE VALVE CARTRIDGE ASSY	1
12	FOOT VALVE/STRAINER ASSEMBLY	1
13	INJECTION VALVE ASSEMBLY	1
18	O-RING	2
24	COUPLING NUT	2
36	O-RING	1
40	ADAPTOR SCREW	4
41	ADAPTOR WASHER	4
100	5-FUNCTION VALVE	1
101	TUBE WAND	1



SERIES MP DRIVE ASSEMBLY AND CONTROL PANEL PARTS IDENTIFICATION



ITEM	DESCRIPTION	QTY	ITEM	DESCRIPTION	QTY
50	ELEC. POWER MODULE (EPM)	1	73	KNOB STICKER, STROKE LG.	1
51	HOUSING	1	74	EPM MOUNTING SCREW	4
52	ELECTRONIC CONTROL BOARD	1	76	GROMMET, STROKE LENGTH	1
53	CONTROL PANEL	1	77	TOUCH PAD (NOT SHOWN)	1
54	DUST COVER ASSEMBLY	1	78	CIRCUIT MOUNT SCREW	5
55	FEMALE ADJUSTMENT SHAFT	1	79	EPM MOUNTING WASHER	4
56	MALE ADJUSTMENT SHAFT	1	81	CONTROL PANEL ASSEMBLY	REF
57	EPM RETAINING PLATE	1	84	STOP/SIGNAL LABEL	1
58	EPM/HOUSING O-RING	1	85	STOP/FUNC. CORD (NOT SHOWN)	2-3
59	CONTROL PANEL O-RING	1	86+	RELAY LABEL	1
60	SECONDARY SEAL	1	87	JUMPER WIRE	1
61#	STRAIN RELIEF (SIGNAL)	1	88	GROUND LUG NUT w/ WASHER	3
62	POWER CORD ASSEMBLY	1	89	GROUND LUG BOLT	1
63	CIRCUIT BREAKER	1	91#	SIGNAL CORD BUSHING	1
64	CONTROL PANEL SCREWS	5-6	92	BREAKER COVER (NOT SHOWN)	1
69	PIN PLUG	2	94#	SIGNAL CORD	1
71	KNOB, STROKE LENGTH	1	97#	SIGNAL/POWER LABEL	1
72	KNOB MOUNTING SCREW	1	106	KNOB KIT, STROKE LENGTH	REF
73	KNOB STICKER, STROKE LG.	1	107	GROUND LUG KIT	REF

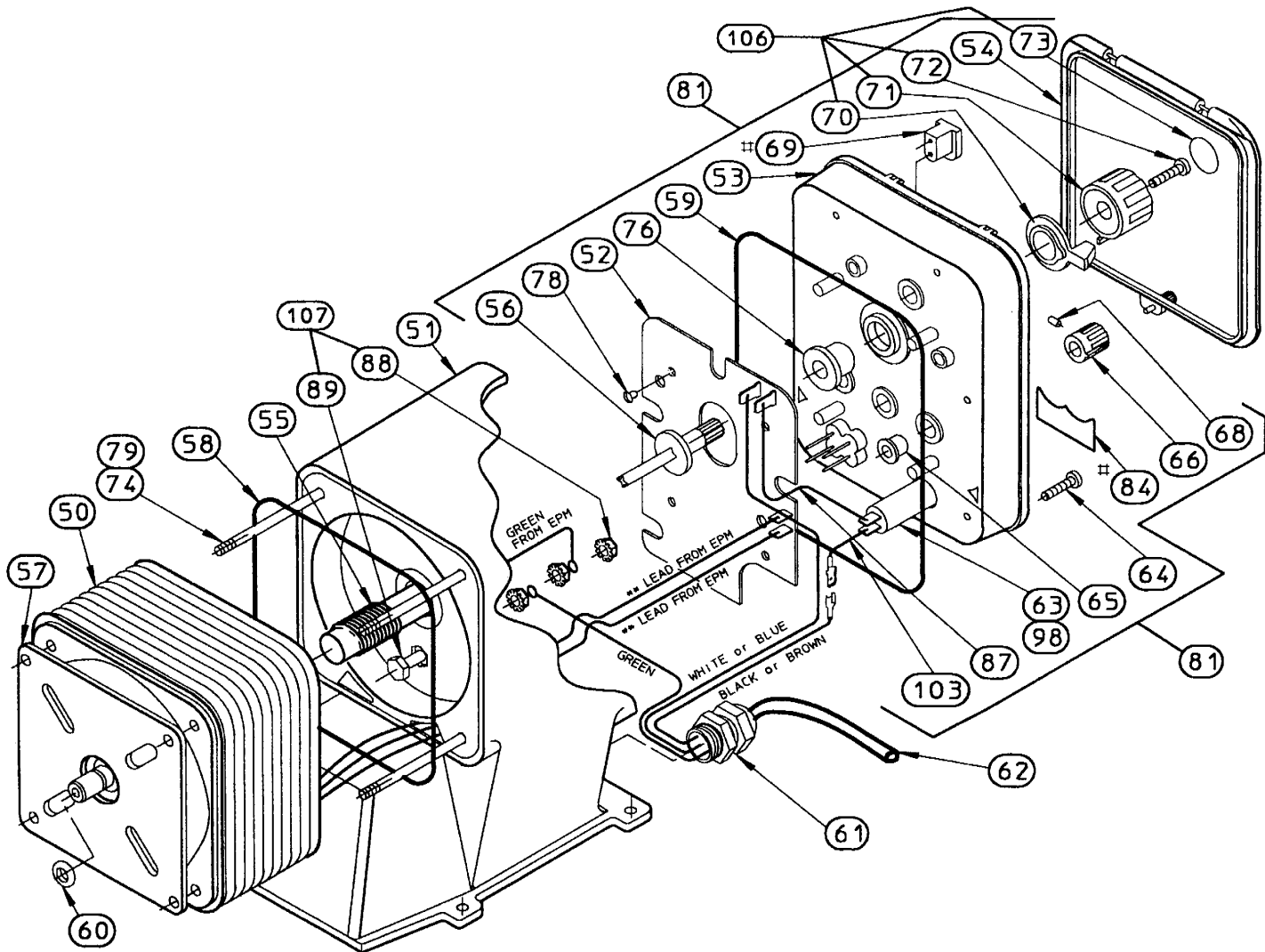
= USED ON POWER RELAY MODEL ONLY.

+ = USED ON SIGNAL RELAY MODEL ONLY.

** = 115 VOLT EPM UNITS HAVE GREY LEADS, 230 VOLT EPM UNITS HAVE RED LEADS.

NOTE: TERMINAL LOCATIONS ON THE CIRCUIT BOARD VARY DEPENDING ON THE CONTROL OPTION.

SERIES ME DRIVE ASSEMBLY AND CONTROL PANEL PARTS IDENTIFICATION



ITEM	DESCRIPTION	QTY	ITEM	DESCRIPTION	QTY
50	ELEC. POWER MODULE (EPM)	1	70	LOCKING TAB	1
51	HOUSING	1	71	KNOB, STROKE LENGTH	1
52	ELECTRONIC CONTROL BOARD	1	72	KNOB MOUNTING SCREW	1
53	CONTROL PANEL	1	73	KNOB STICKER, STROKE LG.	1
54	DUST COVER ASSEMBLY	1	74	EPM MOUNTING SCREW	4
55	FEMALE ADJUSTMENT SHAFT	1	76	GROMMET, STROKE LENGTH	1
56	MALE ADJUSTMENT SHAFT	1	77	PANEL LABEL (NOT SHOWN)	1
57	EPM RETAINING PLATE	1	78	SCREW, CIRCUIT BD. MNT.	4
58	EPM/HOUSING O-RING	1	79	EPM MOUNTING WASHER	4
59	CONTROL PANEL O-RING	1	81	CONTROL PANEL ASSEMBLY	REF
60	SECONDARY SEAL	1	#84	STOP/FCTN LABEL	1
61	STRAIN RELIEF	1	#85	STOP/FUNCT. CORD (NOT SHOWN)	2
62	POWER CORD	1	87	JUMPER WIRE	1
63	FUSE HOLDER	1	88	GROUND LUG NUT w/ WASHER	3
64	CONTROL PANEL SCREW	5-6	89	GROUND LUG BOLT	1
65	GROMMET, STROKE RATE/SWITCH	2	98	FUSE	1
66	KNOB, STROKE RATE/SWITCH	2	103	LEAD ASS'Y, PWR. CONNECTION	1
68	KNOB SET SCREW	2	106	KNOB KIT, STROKE LENGTH	REF
#69	PIN PLUG	2	107	GROUND LUG KIT	REF

* - THESE ITEMS USED ON EXTERNAL PACING, STOP & 4-20ma/STOP OPTIONS.
 NOTE: TERMINAL LOCATIONS ON THE CIRCUIT BOARD VARY
 DEPENDING ON THE CONTROL OPTION.

SERIES MP AND ME **WETTED COMPONENT ASSEMBLIES** **PARTS IDENTIFICATION**

- ★ Selection 2 is provided in charts for proper Model identification.
- ★ Complete Model information is published in price schedule.

W&T Part No.	Qty.	Model MP, ME (Selection 2)
ITEM NO. 1: PUMP HEAD (GFPPL)		
AAA1640	1	00, 01, H1
AAA1661	1	02, H2, M2, M3
AAA1688	1	03, 06, H3, H7, M4, M7
AAA1703	1	10, 12, 15
AAA1718	1	19
AAA1733	1	30, 38
AAA1745	1	79
AAA1649	1	00, 01, H1 ("J" HEAD OPTION)
AAA1676	1	H2, M2, M3 ("J" HEAD OPTION)
ITEM NO. 1: PUMP HEAD (PVC)		
AAA1670	1	H2, M2, M3
AAA1691	1	H3, H7, M4, M7
AAA1706	1	10, 12, 15
AAA1721	1	19
AAA1736	1	30, 38
AAA1748	1	79
AAA1652	1	H1 ("J" HEAD OPTION)
AAA1679	1	H2, M2, M3 ("J" HEAD OPTION)
ITEM NO. 1: PUMP HEAD (SAN)		
AAA1673	1	M2
AAA1697	1	M4, M7
AAA1712	1	15
AAA1727	1	19
AAA1736	1	30, 38
ITEM NO. 1: PUMP HEAD (S.S. 316)		
AAA1637	1	00, 01, H1
AAA1658	1	02, H2, M2
AAA1685	1	03, 06, H3, H7, M4, M7
AAA1700	1	12, 15
AAA1715	1	19
AAA1730	1	30, 38
ITEM NO. 1: PUMP HEAD (PVDF)		
AAA1646	1	00, 01, H1 (STANDARD)
AAA1667	1	02, H2, M2, M3 (STANDARD)
AAA1694	1	H3, M4, M7
AAA1709	1	10, 12, 15
AAA1724	1	19
AAA1739	1	30
AAA1655	1	00, 01, H1 ("J" HEAD OPTION)
AAA1682	1	02, H2, M2, M3 ("J" HEAD OPTION)
ITEM NO. 2: DIAPHRAGM		
AAA1754	1	00, 01, H1
AAA1757	1	02, H2, M2, M3
AAA1760	1	03, 06, H3, H7, M4, M7
AAA1763	1	10, 12, 15
AAA1766	1	19
AAA1769	1	30, 38
AAA1775	1	79

**SERIES MP AND ME
WETTED COMPONENT ASSEMBLIES (CONT.)
PARTS IDENTIFICATION**

W&T Part No.	Qty.	Model MP, ME (Selection 2)
ITEM NO. 3: DEFLECTION PLATE		
AAA2015	1	00, 01, H1
AAA2018	1	02, H2, M2, M3
AAA2021	1	03, 06, H3, H7, M4, M7
AAA2024	1	10, 12, 15
AAA2027	1	19
AAA2030	1	30, 38
ITEM NO. 4: ADAPTER		
AAA2033	1	00, 01, H1
AAA2036	1	02, H2, M2, M3
AAA2039	1	03, 06, H3, H7, M4, M7
AAA2042	1	10, 15
AAA2045	1	06
AAA2048	1	12
AAA2051	1	19
AAA2054	1	30, 38
AAA2069	1	79
ITEM NO. 5: DIAPHRAGM SHIMS (KIT - CONTAINS 3 SHIMS)		
AAA2585	0-2	ALL MODELS
ITEM NO. 6: EPM/ADAPTER O-RING		
AAA2123	1	00, 01, 02, 03, 10, 15, H1, H2, H3, H7, M2, M3, M4, M7
AAA2126	1	06, 12, 19, 30, 38, 76
ITEM NO. 7: PUMP HEAD SCREWS AND WASHERS KIT (CONTAINS 4 BOLTS AND 4 WASHERS)		
AAA2588	4	00, 01, 02, 03, 06, H1, H2, H3, H7, M2, M3, M4, M7
AAA2591	4	10, 12, 15, 19, 30, 38
AAA2594	6	79
AAA2597 (SS Head Only)	4	00, 02, 03, 06, H2, H3, H7, M2, M3, M4, M7
AAA2600 (SS Head Only)	4	10, 12, 15, 19, 30, 38
ITEM NO. 9: SUCTION VALVE ASSEMBLY		
Refer to price schedule	1	TUBING SIZES AND MATERIALS ARE LISTED
ITEM NO. 10: DISCHARGE VALVE ASSEMBLY		
Refer to price schedule	1	TUBING SIZES AND MATERIALS ARE LISTED
ITEM NO. 12: FOOT VALVE/STRAINER ASSEMBLY		
Refer to price schedule	1	TUBING SIZES AND MATERIALS ARE LISTED
ITEM NO. 18: SUCTION/DISCHARGE O-RING		
AAA1778	1 EACH	ALL MODELS
AAA1781	1 EACH	ALL MODELS
AAA1784	1 EACH	ALL MODELS
ITEM NO. 24: COUPLING NUTS		
Refer to price schedule	1	TUBING SIZES AND MATERIALS ARE LISTED
ITEM NO. 36: BLEED VALVE O-RING		
AAA1814	1	ALL MODELS
ITEM NO. 39: INJECTION/BACK PRESSURE VALVE WITH WEIGHT		
Refer to price schedule	1	TUBING SIZES AND MATERIALS ARE LISTED
ITEM NO. 40: ADAPTER SCREW		
	4	H8 ONLY
ITEM NO. 41: ADAPTER WASHER		
	4	H8 ONLY
ITEM NO. 100: FIVE FUNCTION VALVE ASSEMBLY (STANDARD)		
Refer to price schedule	1	TUBING SIZES AND MATERIALS ARE LISTED
ITEM NO. 101: TUBE WAND		
Refer to price schedule	1	LENGTHS ARE LISTED

**SERIES MP AND ME
DRIVE ASSEMBLY AND CONTROL PANEL
PARTS IDENTIFICATION**

W&T Part No.	Qty.	Voltage	Model MP, ME (Selection 2)
ITEM NO. 50: EPM			
AAA1847	1	115V	00, 01, H1, H2, M2, M3, M4
AAA1850	1	230V	00, 01, H1, H2, M2, M3, M4
AAA1853	1	115V	02, H3, M7
AAA1856	1	230V	02, H3, M7
AAA1859	1	115V	03, 10, 15, H7
AAA1862	1	230V	03, 10, 15, H7
AAA1865	1	115V	06, 12, 19, 30, 38, 79
AAA1868	1	230V	06, 12, 19, 30, 38, 79
ITEM NO. 51: HOUSING			
AAA1895	1	-	06, 12, 19, 30, 38, 79
AAA1898	1	-	00, 01, 02, 03, H1, H2, H3, M2, M3, M4
AAA1901	1	-	10, 15, H7, M7
ITEM NO. 52: ELECTRONIC CONTROL BD - STANDARD (DUAL FUNCTION - ME ONLY)			
AAA1910	1	115V	00, 01, 02, H1, H2, H3, M2, M3, M4, M7
AAA1913	1	230V	00, 01, 02, H1, H2, H3, M2, M3, M4, M7
AAA1928	1	115V	03, 10, 15, H7
AAA1931	1	230V	03, 10, 15, H7
AAA1934	1	115V	06, 12, 19, 30, 38, 79
AAA1937	1	230V	06, 12, 19, 30, 38, 79
ITEM NO. 52: ELECTRONIC CONTROL BD - EXT/STOP FUNCTION (ME ONLY)			
AAA1916	1	115V	00, 01, 02, H1, H2, H3, M2, M3, M4, M7
AAA1919	1	230V	00, 01, 02, H1, H2, H3, M2, M3, M4, M7
AAA1940	1	115V	03, 10, 15, H7
AAA1943	1	230V	03, 10, 15, H7
AAA1946	1	115V	06, 12, 19, 30, 38, 79
AAA1949	1	230V	06, 12, 19, 30, 38, 79
ITEM NO. 52: ELECTRONIC CONTROL BD - 4-20mA/STOP FUNCTION (ME ONLY)			
AAA1922	1	115V	00, 01, 02, H1, H2, H3, M2, M3, M4, M7
AAA1925	1	230V	00, 01, 02, H1, H2, H3, M2, M3, M4, M7
AAA1952	1	115V	03, 10, 15, H7
AAA1955	1	230V	03, 10, 15, H7
AAA1958	1	115V	06, 12, 19, 30, 38, 79
AAA1961	1	230V	06, 12, 19, 30, 38, 79
ITEM NO. 52: ELECTRONIC CONTROL BD - SIGNAL LEVEL (MP ONLY)			
AAA1979	1	115V	00, 01, 02, H1, H2, H3, M2, M3, M4, M7
AAA1982	1	230V	00, 01, 02, H1, H2, H3, M2, M3, M4, M7
AAA1991	1	115V	03, 10, 15, H7
AAA1994	1	230V	03, 10, 15, H7
AAA2003	1	115V	06, 12, 19, 30, 38, 79
AAA2006	1	230V	06, 12, 19, 30, 38, 79
ITEM NO. 52: ELECTRONIC CONTROL BD - POWER LEVEL (MP ONLY)			
AAA1985	1	115V	00, 01, 02, H1, H2, H3, M2, M3, M4, M7
AAA1988	1	230V	00, 01, 02, H1, H2, H3, M2, M3, M4, M7
AAA1997	1	115V	03, 10, 15, H7
AAA2000	1	230V	03, 10, 15, H7
AAA2009	1	115V	06, 12, 19, 30, 38, 79
AAA2012	1	230V	06, 12, 19, 30, 38, 79
ITEM NO. 53: CONTROL PANEL - STANDARD (ME ONLY)			
AAA2084	1	-	00, 01, 02, 03, 10, 15, H1, H2, H3, H7, M2, M3, M4, M7
AAA2087	1	-	06, 12, 19, 30, 38, 79

**SERIES MP AND ME
DRIVE ASSEMBLY AND CONTROL PANEL (CONT.)
PARTS IDENTIFICATION**

W&T Part No.	Qty.	Voltage	Model MP, ME (Selection 2)
ITEM NO. 53: CONTROL PANEL - EXT/STOP AND 4-20mA/STOP (ME ONLY)			
AAA2093	1	-	00, 01, 02, 03, 10, 15, H1, H2, H3, H7, M2, M3, M4, M7
	1	-	06, 12, 19, 30, 38, 79
ITEM NO. 53: CONTROL PANEL - SIGNAL LEVEL (MP ONLY)			
AAA2075	1	-	00, 01, 02, 03, 10, 15, H1, H2, H3, H7, M2, M3, M4, M7
AAA2072	1	-	06, 12, 19, 30, 38, 79
ITEM NO. 53: CONTROL PANEL - POWER LEVEL (MP ONLY)			
AAA2078	1	-	00, 01, 02, 03, 10, 15, H1, H2, H3, H7, M2, M3, M4, M7
AAA2081	1	-	06, 12, 19, 30, 38, 79
ITEM NO. 54: DUST COVER ASSEMBLY			
AAA2093	1	-	00, 01, 02, 03, 10, 15, H1, H2, H3, H7, M2, M3, M4, M7
AAA2090	1	-	06, 12, 19, 30, 38, 79
ITEM NO. 55: FEMALE ADJUSTMENT SHAFT			
AAA2096	1	-	00, 01, 02, 03, H1, H2, H3, M2, M3, M4
AAA2099	1	-	06, 10, 12, 15, 19, 30, 38, 79, H7, M7
ITEM NO. 56: MALE ADJUSTMENT SHAFT			
AAA2108	1	-	ALL MODELS
ITEM NO. 57: EPM RETAINING PLATE			
AAA2117	1	-	00, 01, 02, 03, 10, 15, H1, H2, H3, H7, M2, M3, M4, M7
AAA2114	1	-	06, 12, 19, 30, 38, 79
ITEM NO. 58: O-RING EPM/HOUSING			
AAA2123	1	-	00, 01, 02, 03, 10, 15, H1, H2, H3, H7, M2, M3, M4, M7
AAA2126	1	-	06, 12, 19, 30, 38, 79
ITEM NO. 60: SECONDARY SEAL			
AAA1817	1	-	ALL MODELS
ITEM NO. 62: POWER CORD			
AAA2150	1	115V	ALL MODELS
AAA2153	1	230V	ALL MODELS
ITEM NO. 63: OVERLOAD DEVICE (CIRCUIT BREAKER) OR FUSE HOLDER			
AAA2156	1	115V/230V	ALL MODELS WITH CIRCUIT BREAKER
AAA2180	1	115V/230V	ALL MODELS WITH FUSE HOLDER
ITEM NO. 64: CONTROL PANEL SCREW KIT (CONTAINS 6 SCREWS)			
AAA2603	6	-	ALL MODELS
ITEM NO. 65: GROMMET STROKE RATE/SWITCH			
AAA2171	2	-	ALL MODELS
ITEM NO. 66: KNOB, STROKE RATE/SWITCH			
AAA2177	2	-	ALL MODELS
ITEM NO. 69: PIN PLUG - EXT/STOP & 4-20mA/STOP			
AAA2174	2 - 3	-	ALL MODELS

**SERIES MP AND ME
DRIVE ASSEMBLY AND CONTROL PANEL (CONT.)
PARTS IDENTIFICATION**

W&T Part No.	Qty.	Voltage	Model MP, ME (Selection 2)
ITEM NO. 74: EPM MOUNTING SCREWS			
AAA2195	4	-	00, 01, H1, H2, M2, M3, M4
AAA2198	4	-	02, 06, 12, 19, 30, 38, 79, H3, M7
AAA2201	4	-	03, 10, 15, H7
ITEM NO. 76: GROMMET STROKE LENGTH			
AAA2204	1	-	ALL MODELS
ITEM NO. 81: CONTROL PANEL ASSEMBLY - STANDARD (DUAL FUNCTION) (ME ONLY)			
AAA2207	1	115V	01, 02, H1, H2, H3, M2, M3, M4, M7
AAA2210	1	230V	01, 02, H1, H2, H3, M2, M3, M4, M7
AAA2303	1	115V	03, 12, H7
AAA2306	1	230V	03, 12, H7
AAA2321	1	115V	06, 12, 19, 38, 79
AAA2324	1	230V	06, 12, 19, 38, 79
	1	115V	00
	1	230V	00
	1	115V	10
	1	230V	10
AAA2249	1	115V	30
AAA2252	1	230V	30
ITEM NO. 81: CONTROL PANEL ASSEMBLY - EXTERNAL/STOP (ME ONLY)			
AAA2291	1	115V	01, 02, H1, H2, H3, M2, M3, M4, M7
AAA2294	1	230V	01, 02, H1, H2, H3, M2, M3, M4, M7
AAA2309	1	115V	03, 12, H7
AAA2312	1	230V	03, 12, H7
AAA2327	1	115V	06, 12, 19, 38, 79
AAA2330	1	230V	06, 12, 19, 38, 79
	1	115V	00
	1	230V	00
	1	115V	10
	1	230V	10
AAA2255	1	115V	30
AAA2258	1	230V	30
ITEM NO. 81: CONTROL PANEL ASSEMBLY - 4-20mA/STOP (ME ONLY)			
	1	115V	01, 02, H1, H2, H3, M2, M3, M4, M7
	1	230V	01, 02, H1, H2, H3, M2, M3, M4, M7
AAA2315	1	115V	03, 12, H7
AAA2318	1	230V	03, 12, H7
AAA2333	1	115V	06, 12, 19, 38, 79
AAA2336	1	230V	06, 12, 19, 38, 79
	1	115V	00
	1	230V	00
	1	115V	10
	1	230V	10
	1	115V	30
	1	230V	30

**SERIES MP AND E PLUS
DRIVE ASSEMBLY AND CONTROL PANEL (CONT.)
PARTS IDENTIFICATION**

W&T Part No.	Qty.	Voltage	Model MP, ME (Selection 2)
ITEM NO. 81: CONTROL PANEL ASSEMBLY - SIGNAL LEVEL (MP ONLY)			
AAA2282	1	115V	01, 02, H1, H2, H3, M2, M3, M4, M7
AAA2288	1	230V	01, 02, H1, H2, H3, M2, M3, M4, M7
AAA2279	1	115V	00
AAA2285	1	230V	00
AAA2357	1	115V	03, 15, H7
AAA2363	1	230V	03, 15, H7
AAA2354	1	115V	10
AAA2360	1	230V	10
AAA2381	1	115V	06, 12, 19, 38, 79
AAA2387	1	230V	06, 12, 19, 38, 79
AAA2378	1	115V	30
AAA2384	1	230V	30
ITEM NO. 81: CONTROL PANEL ASSEMBLY - POWER LEVEL (MP ONLY)			
AAA2345	1	115V	01, 02, H1, H2, H3, M2, M3, M4, M7
AAA2351	1	230V	01, 02, H1, H2, H3, M2, M3, M4, M7
AAA2342	1	115V	00
AAA2348	1	230V	00
AAA2369	1	115V	03, 15, H7
AAA2375	1	230V	03, 15, H7
AAA2366	1	115V	10
AAA2372	1	230V	10
AAA2393	1	115V	06, 12, 19, 38, 79
AAA2399	1	230V	06, 12, 19, 38, 79
AAA2390	1	115V	30
AAA2396	1	230V	30
ITEM NO. 85: STOP/FUNC. CORDS			
AAA2411	2 - 3	-	ALL MODELS
ITEM NO. 92: BREAKER COVER			
AAA2417	1	-	ALL MODELS
ITEM NO. 106: STROKE LENGTH KNOB KIT			
AAA2606	1	-	ALL MODELS
ITEM NO. 107: GROUND LUG KIT (CONTAINS 1 BOLT AND 3 NUTS)			
AAA2609	1	-	ALL MODELS

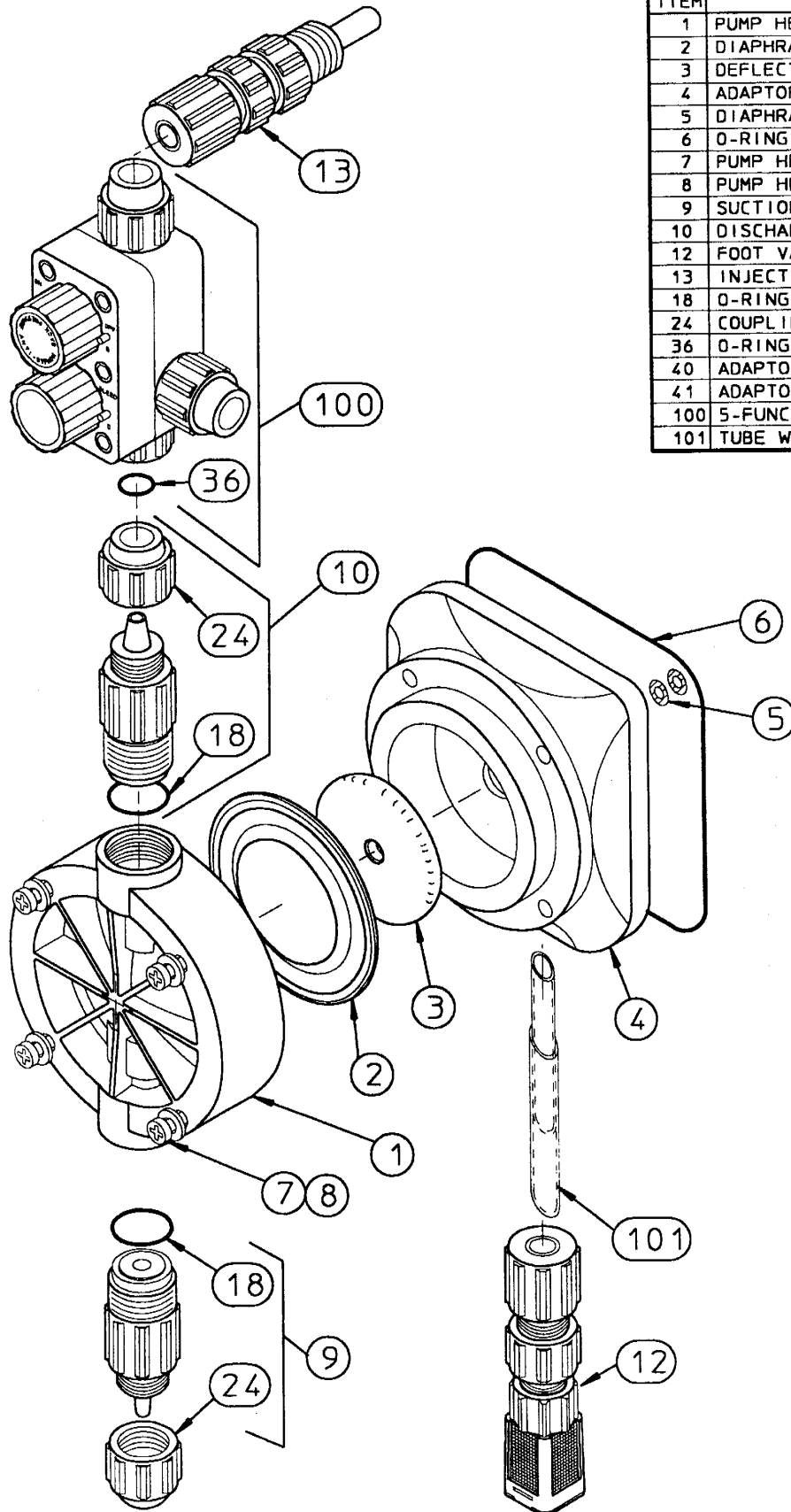
MEGA

AAA2165 98 FUSE 2A 115V

MICRO

AAA2156

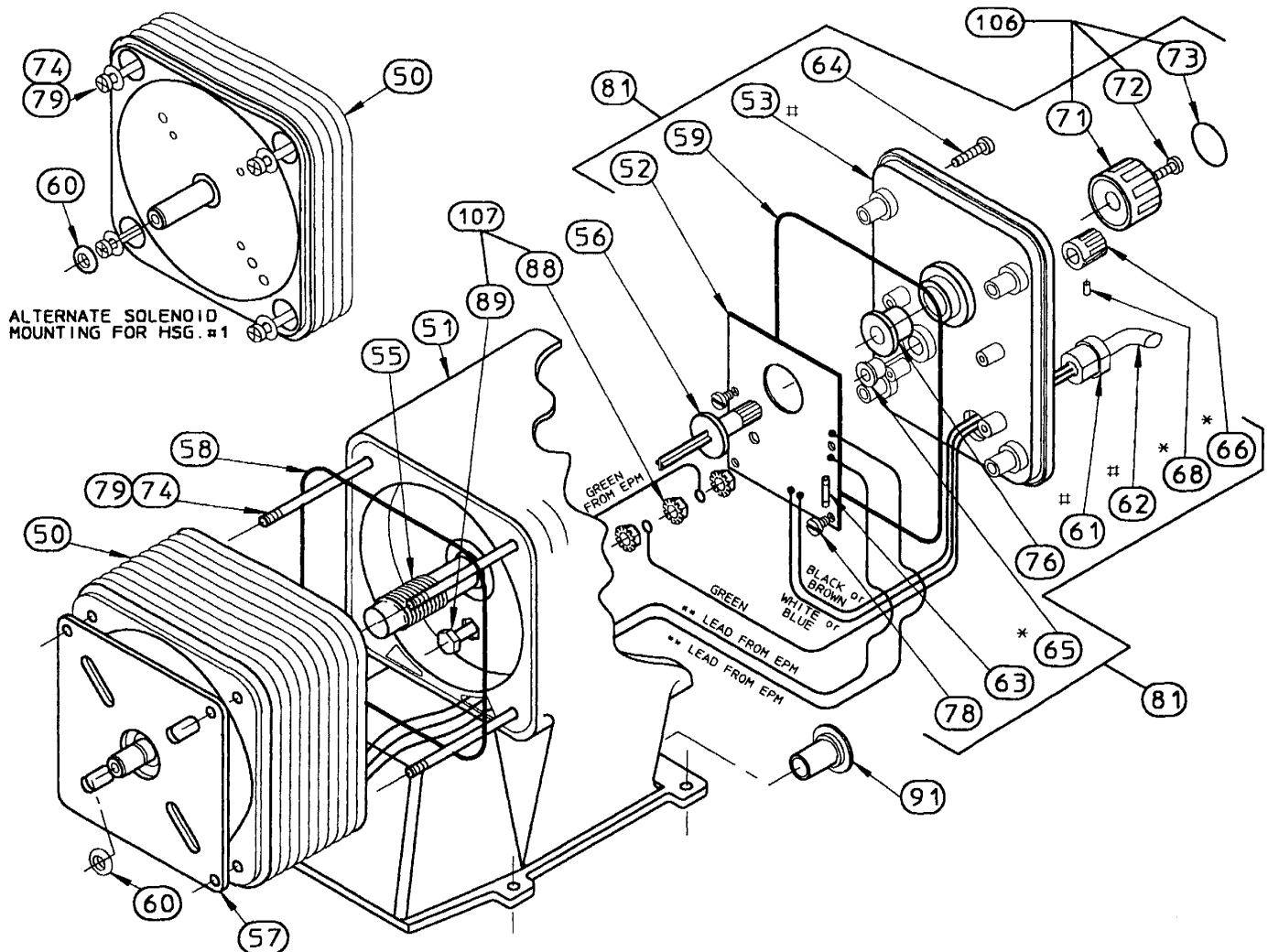
SERIES EC, MO, MI AND MD WETTED COMPONENT ASSEMBLIES PARTS IDENTIFICATION



ITEM	DESCRIPTION	QTY
1	PUMP HEAD	1
2	DIAPHRAGM	1
3	DEFLECTION PLATE	1
4	ADAPTOR	1
5	DIAPHRAGM SHIMS	0-2
6	O-RING	1
7	PUMP HEAD SCREWS	4-6
8	PUMP HEAD WASHERS	4-6
9	SUCTION VALVE CARTRIDGE ASSY	1
10	DISCHARGE VALVE CARTRIDGE ASSY	1
12	FOOT VALVE/STRAINER ASSEMBLY	1
13	INJECTION VALVE ASSEMBLY	1
18	O-RING	2
24	COUPLING NUT	2
36	O-RING	1
40	ADAPTOR SCREW	4
41	ADAPTOR WASHER	4
100	5-FUNCTION VALVE	1
101	TUBE WAND	1

NOTE: PAGES 13 AND 14 PROVIDE SPECIFIC PART DESCRIPTIONS PER MODEL

SERIES EC, MO, MI AND MD DRIVE ASSEMBLY AND CONTROL PANEL PARTS IDENTIFICATION



ITEM	PART NAME	QTY	ITEM	PART NAME	QTY
50	ELECTRONIC POWER MODULE	1	68*	KNOB, SET SCREW	1
51	HOUSING	1	71	KNOB, STROKE LENGTH	1
52	ELECTRONIC CONTROL BOARD	1	72	SCREW, KNOB MOUNTING	1
53*	CONTROL PANEL	1	73	STICKER, STROKE LENGTH KNOB	1
55	FEMALE ADJUSTMENT SHAFT	1	74	SCREW, EPM MOUNTING	4
56	MALE ADJUSTMENT SHAFT	1	76	GROMMET, STROKE LENGTH	1
57	EPM RETAINING PLATE	1	77*	PANEL LABEL (NOT SHOWN)	1
58	EPM/HOUSING O-RING	1	78	SCREW, ELECTRONIC CONTROL BOARD	2
59	CONTROL PANEL O-RING	1	79	EPM MOUNTING WASHER	4
60	SECONDARY SEAL	1	81	CONTROL PANEL ASSEMBLY	REF
61*	STRAIN RELIEF	1	88*	GROUND LUG NUT w/ WASHER	3
62*	POWER CORD	1	89*	GROUND LUG BOLT	1
63	FUSE	1	91	PLUG, WIRE ENTRY (#2 HSG. ONLY)	1
64	CONTROL PANEL SCREW	4-5	93	CONTROL PANEL SUB-ASSEMBLY	REF
65*	GROMMET, STROKE RATE/SWITCH	1	106	KNOB KIT, STROKE LENGTH	REF
66*	KNOB, STROKE RATE	1	107	GROUND LUG KIT	REF

- * = COMPONENTS OF ITEM #93.
- * = THESE ITEMS NOT USED ON 'LC' MODEL PUMPS.
- ** = 115 VOLT EPM UNITS HAVE GREY LEADS.
- ** = 230 VOLT EPM UNITS HAVE RED LEADS.
- ** = 12 vDC EPM UNITS HAVE WHITE LEADS.
- + = THESE ITEMS ARE NOT USED ON 12vDC POWERED UNITS.

SERIES EC, MO, MI AND MD **WETTED COMPONENT ASSEMBLIES** **PARTS IDENTIFICATION**

- ★ Product Class: Econo = EC, Mono = MO, Mini = MI, Mini-DC = MD
- ★ Selection 2 is provided in charts for proper model identification.
- ★ Complete model information is published in price schedules.
- ★ When X appears under a product class it signifies part is not used or available.

W&T Part No.	Qty.	MO, EC-L MODELS (Selection 2)	EC-M&H, MI, MD MODELS (Selection 2)
ITEM NO. 1: PUMP HEAD (GFPPL)			
AAA1640	1	L1 (STANDARD)	01, H1 (STANDARD)
AAA1661	1	L2 (STANDARD)	02, H2, M2 (STANDARD)
AAA1688	1	L3, L5	H3, M3, M4, M5, M7
AAA1649	1	L1 ("J" HEAD OPTION)	01, H1("J" HEAD OPTION)
AAA1676	1	L2 ("J" HEAD OPTION)	02, H2, M2 ("J" HEAD OPTION)
ITEM NO. 1: PUMP HEAD (PVC)			
	1	L1 (STANDARD)	H1 (STANDARD)
AAA1670	1	L2 (STANDARD)	H2, M2 (STANDARD)
AAA1691	1	L3, L5	H3, M3, M4, M5, M7
AAA1652	1	L1 ("J" HEAD OPTION)	H1("J" HEAD OPTION)
AAA1679	1	L2 ("J" HEAD OPTION)	H2, M2 ("J" HEAD OPTION)
ITEM NO. 1: PUMP HEAD (SAN)			
AAA1634	1	L1	X
AAA1673	1	L2	H2, M2 (MI ONLY)
AAA1697	1	L3, L5	M3, M4, M5, M7
ITEM NO. 1: PUMP HEAD (PVDF)			
AAA1646	1	L1 (STANDARD)	01, H1 (STANDARD)
AAA1667	1	L2 (STANDARD)	02, H2, M2 (STANDARD)
AAA1694	1	L3, L5	H3, M3, M4, M5, M7
AAA1655	1	L1 ("J" HEAD OPTION)	01, H1("J" HEAD OPTION)
AAA1682	1	L2 ("J" HEAD OPTION)	02, H2, M2 ("J" HEAD OPTION)
ITEM NO. 1: PUMP HEAD (S.S. 316)			
AAA1637	1	L1	01, H1
AAA1658	1	L2	02, H2, M2
AAA1685	1	L3, L5	H3, M3, M4, M5, M7
ITEM NO. 2: DIAPHRAGM			
AAA1754	1	L1	01, H1
AAA1757	1	L2	02, H2, M2
AAA1760	1	L3, L5	H3, M3, M4, M5, M7
ITEM NO. 3: DEFLECTION PLATE			
AAA2015	1	L1	01, H1
AAA2018	1	L2	02, H2, M2
AAA2021	1	L3, L5	H3, M3, M4, M5, M7
ITEM NO. 4: ADAPTOR			
AAA2060	1	L1	01, H1
AAA2063	1	L2	H2, M2
AAA2066	1	L3, L5	M3, M4, M5, M7
AAA2036	1	X	02
AAA2039	1	X	H3, M7
ITEM NO. 5: DIAPHRAGM SHIMS (KIT)			
AAA2585	0-2	ALL MODELS	ALL MODELS
ITEM NO. 6: EPM/ADAPTER O-RING			
AAA2120	1	ALL MODELS	01, H1, H2, M2, M3, M4, M5
AAA2123	1	X	02, H3, M7

**SERIES EC, MO, MI AND MD
WETTED COMPONENT ASSEMBLIES (CONT.)
PARTS IDENTIFICATION**

W&T Part No.	Qty.	MO, EC-L MODELS (Selection 2)	EC-M&H, MI, MD MODELS (Selection 2)
ITEM NO. 7 & 8: PUMP HEAD SCREWS AND WASHERS KITS (CONTAINS 4 BOLTS AND 4 WASHERS)			
AAA2588	4	ALL MODELS	ALL MODELS
AAA2597	4	ALL MODELS	ALL MODELS
ITEM NO. 9: SUCTION VALVE ASSEMBLY			
Refer to price schedule	1	TUBING SIZES AND MATERIALS ARE LISTED	
ITEM NO. 10: DISCHARGE VALVE ASSEMBLY			
Refer to price schedule	1	TUBING SIZES AND MATERIALS ARE LISTED	
ITEM NO. 12: FOOT VALVE/STRAINER ASSEMBLY			
Refer to price schedule	1	TUBING SIZES AND MATERIALS ARE LISTED	
ITEM NO. 13: INJECTION/BACK PRESSURE VALVE			
Refer to price schedule	1	TUBING SIZES AND MATERIALS ARE LISTED	
ITEM NO. 18: SUCTION/DISCHARGE O-RING			
AAA1778	1 EACH	ALL MODELS	ALL MODELS
AAA1781	1 EACH	ALL MODELS	ALL MODELS
AAA1784	1 EACH	ALL MODELS	ALL MODELS
ITEM NO. 24: COUPLING NUT			
Refer to price schedule	1	TUBING SIZES AND MATERIALS ARE LISTED	
ITEM NO. 36: BLEED VALVE O-RING			
AAA1814	1	ALL MODELS	ALL MODELS
ITEM NO. 100: FIVE FUNCTION VALVE ASSEMBLY (STANDARD)			
Refer to price schedule	1	TUBING SIZES AND MATERIALS ARE LISTED	
ITEM NO. 101: TUBE WAND			
Refer to price schedule	1	LENGTHS ARE LISTED	

**SERIES EC, MO, MI AND MD
DRIVE ASSEMBLY AND CONTROL PANEL (CONT.)
PARTS IDENTIFICATION**

W&T Part No.	Qty.	Voltage	MO, EC-L MODELS (Selection 2)	EC-M&H, MI, MD MODELS (Selection 2)
ITEM NO. 50: EPM				
AAA1871	1	115V	L5 (MO ONLY)	M5
AAA1874	1	230V	L5 (MO ONLY)	M5
AAA1877	1	115V	X	MI 01, H1, H2, M2, M3, M4
AAA1880	1	230V	X	MI 01, H1, H2, M2, M3, M4
AAA1883	1	115V	L1, L2, L3	EC
AAA1886	1	230V	L1, L2, L3	EC
	1	115V	L5 (EC ONLY)	X
	1	230V	L5 (EC ONLY)	X
AAA1889	1	12 VDC	X	MD M7
AAA1892	1	12 VDC	X	MD H1, H2, M4
ITEM NO. 51: HOUSING				
AAA1904	1	-	L1, L2, L3	01, H1, H2, M2, M3, M4
AAA1907	1	-	L5	M5
AAA1898	1	-	X	02, H3
AAA1901	1	-	X	M7
ITEM NO. 52: ELECTRONIC CONTROL BOARD (DUAL FUNCTION)				
AAA1973	1	115V	ALL EC MODELS	ALL MI MODELS
AAA1976	1	230V	ALL EC MODELS	ALL MI MODELS
AAA1967	1	115V	ALL MO MODELS	X
AAA1970	1	230V	ALL MO MODELS	X
AAA1964	1	12 VDC	X	ALL MD MODELS
ITEM NO. 53: CONTROL PANEL				
	1	-	ALL MODELS	01, H1, H2, M2, M3, M4, M5
	1	-	X	02, H3, M7
ITEM NO. 55: FEMALE ADJUSTMENT SHAFT				
AAA2102	1	-	L1, L2, L3	01, H1, H2, M2, M3, M4, M5
AAA2105	1	-	L5	M5
AAA2096	1	-	X	02, H3
AAA2099	1	-	X	M7
ITEM NO. 56: MALE ADJUSTMENT SHAFT				
AAA2111	1	-	ALL MODELS	01, H1, H2, M2, M3, M4, M5
AAA2108	1	-	X	02, H3, M7
ITEM NO. 58: O-RING, EMP/HOUSING				
AAA2120	1	-	ALL MODELS	01, H1, H2, M2, M3, M4, M5
AAA2123	1	-	X	02, H3, M7
ITEM NO. 59: CONTROL PANEL O-RING				
AAA2129	1	-	ALL MODELS	01, H1, H2, M2, M3, M4, M5
AAA2132	1	-	X	02, H3, M7
ITEM NO. 60: SECONDARY SEAL				
	1	-	ALL MODELS	ALL MODELS
ITEM NO. 61: STRAIN RELIEF				
AAA2141	1	-	ALL MODELS	ALL MODELS
ITEM NO. 62: POWER CORD				
AAA2144	1	115V	ALL MODELS	ALL EC H&M, MI MODELS
AAA2147	1	230V	ALL MODELS	ALL EC H&M, MI MODELS
AAA2150	1	12 VDC	ALL MODELS	ALL MD MODELS

**SERIES EC, MO, MI AND MD
DRIVE ASSEMBLY AND CONTROL PANEL (CONT.)
PARTS IDENTIFICATION**

W&T Part No.	Qty.	Voltage	MO, EC-L MODELS (Selection 2)	EC-M&H, MI, MD MODELS (Selection 2)
ITEM NO. 63: OVERLOAD DEVICE (FUSE)				
AAA2159	1	115V/230V	ALL MODELS	ALL EC H&M, MI MODELS
	1	12 VDC	X	ALL MD MODELS
ITEM NO. 64: CONTROL PANEL SCREW (KIT)				
AAA2603	4	-	ALL MODELS	ALL MODELS
ITEM NO. 65: GROMMET, STROKE RATE/SWITCH				
AAA2171	1	-	ALL EC L MODELS	ALL MODELS
ITEM NO. 66: KNOB, STROKE RATE/SWITCH				
AAA2177	1	-	ALL EC L MODELS	ALL MODELS
ITEM NO. 74: EPM MOUNTING SCREWS				
	4	-	ALL MODELS	01, H1, H2, M2, M3, M4, M5
AAA2198	4	-	X	02, H3, M7
ITEM NO. 76: GROMMET STROKE LENGTH				
AAA2204	1	-	ALL MODELS	ALL MODELS
ITEM NO. 78: ELECTRONIC CONTROL BOARD SCREW				
	1-2	-	ALL MODELS	ALL MODELS
ITEM NO. 79: EPM MOUNTING WASHER				
	4	-	ALL MODELS	01, H1, H2, M2, M3, M4, M5
	4	-	X	02, H3, M7
ITEM NO. 81: CONTROL PANEL ASSEMBLY (DUAL FUNCTION)				
AAA2339	1	12 VDC	X	MD H1, H2, M4
AAA2222	1	115V	X	01, H1, H2, M2, M3, M4
AAA2225	1	230V	X	01, H1, H2, M2, M3, M4
AAA2213	1	115V	L1, L2, L3	X
AAA2216	1	230V	L1, L2, L3	X
AAA2219	1	12 VDC	X	M7 (MD ONLY)
AAA2228	1	115V	X	02, H3, M7
AAA2231	1	230V	X	02, H3, M7
AAA2261	1	115V	L5 (EC ONLY)	X
AAA2264	1	230V	L5 (EC ONLY)	X
AAA2273	1	115V	X	L5
AAA2276	1	230V	X	L5
AAA2267	1	115V	X	EC H1, H2, M3
AAA2270	1	230V	X	EC H1, H2, M3
ITEM NO. 81: CONTROL PANEL ASSEMBLY (SINGLE FUNCTION) FIXED FREQ.				
AAA2234	1	115V	L1, L2, L3	X
AAA2237	1	230V	L1, L2, L3	X
AAA2243	1	115V	L5	X
AAA2246	1	230V	L5	X
ITEM NO. 106: KNOB, STROKE LENGTH (KIT)				
AAA2186	1	-	ALL MODELS	ALL MODELS

STANDARD DEGASSING HEAD CONNECTIONS

